

# Crystal Cubes™

US patents #6,820,999 and #6,511,208 | Other patents pending.



# Crystal Cubes™

US patents #6,820,999 and #6,511,208 | Other patents pending.

Superior craftsmanship unifies a glass enclosure, polished gears and remote control\*\* operation into one elegant fixture.

Revolutionized by technology; lamp speed, dimming and direction are adjusted with ease to allow for dynamic, artistic effects.

The Crystal Cube\* is designed for use with all low voltage and line voltage lamps.

As with all Modular International product families, customization is available. Please consult factory.

## Mounting Configurations

---



**Wall Mounted**



**Ceiling Mounted**



**Pendant Mounted**

\*FIXTURES ARE ILLUSTRATED WITH GLASS HOUSINGS, NOT CRYSTAL  
\*\*FIXTURES REQUIRE THE USE OF A REMOTE WIRELESS CONVERTER TO UTILIZE WIRELESS DEVICE

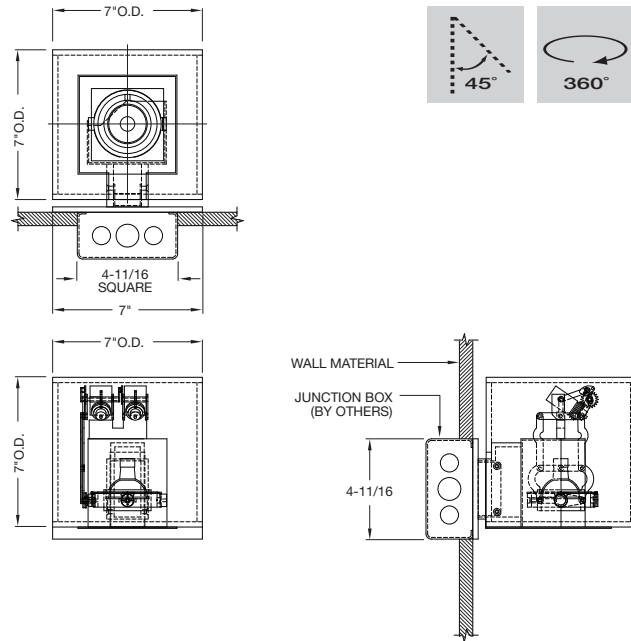
# Crystal Cubes™

US patents #6,820,999 and #6,511,208 | Other patents pending.

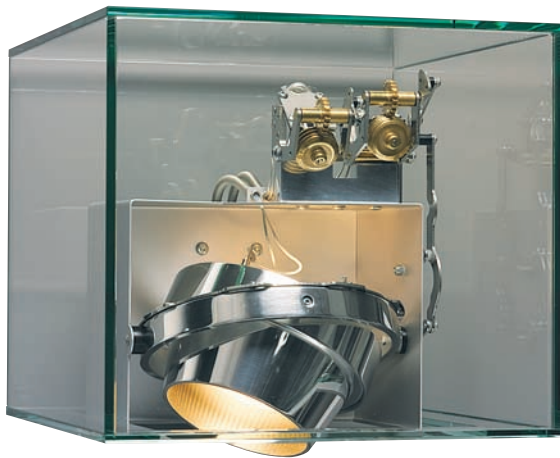
## One MR16 Lamp, Wall Mounted



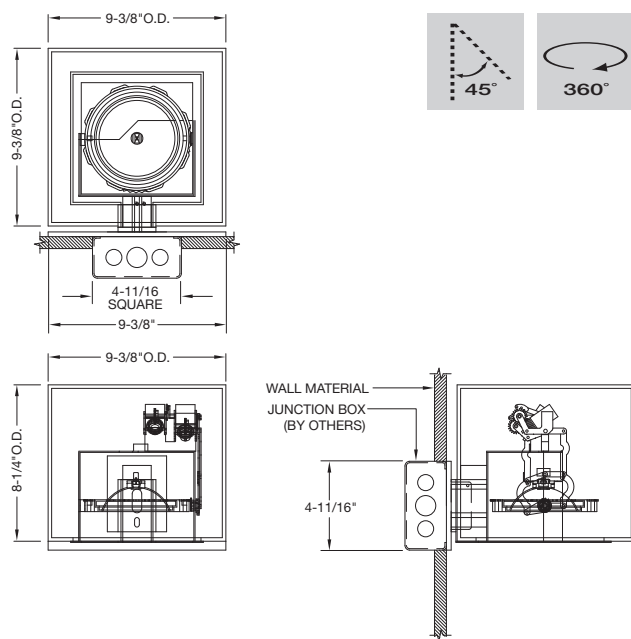
MCR1B-SQ-RT-WM  
 REMOTE GEAR REQUIRED  
 MOTORIZED MR16 LAMP & GIMBAL RING w/SHIELDING  
 FILTER MEDIA SYSTEM



## One AR111 Lamp, Wall Mounted



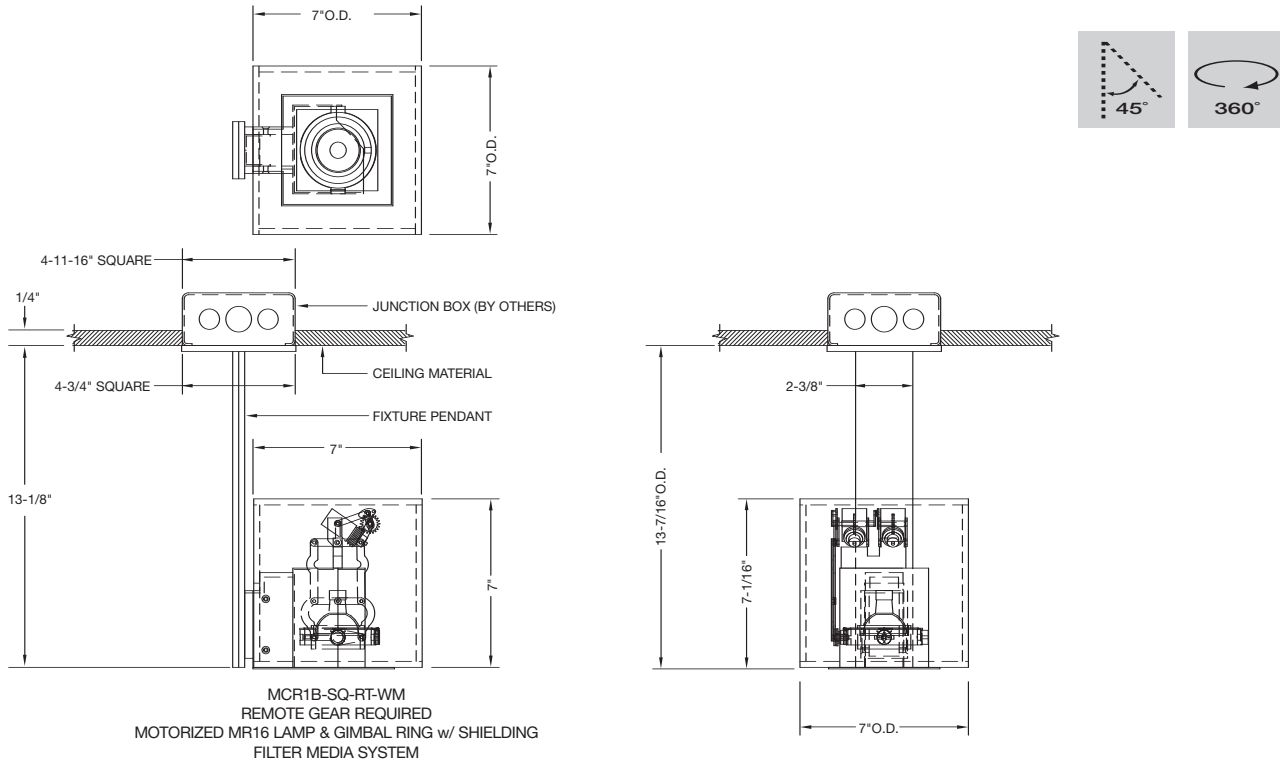
MCR1D-SQ-RT-WM  
 REMOTE GEAR REQUIRED  
 MOTORIZED AR111 LAMP & GIMBAL RING w/SHIELDING  
 FILTER MEDIA SYSTEM



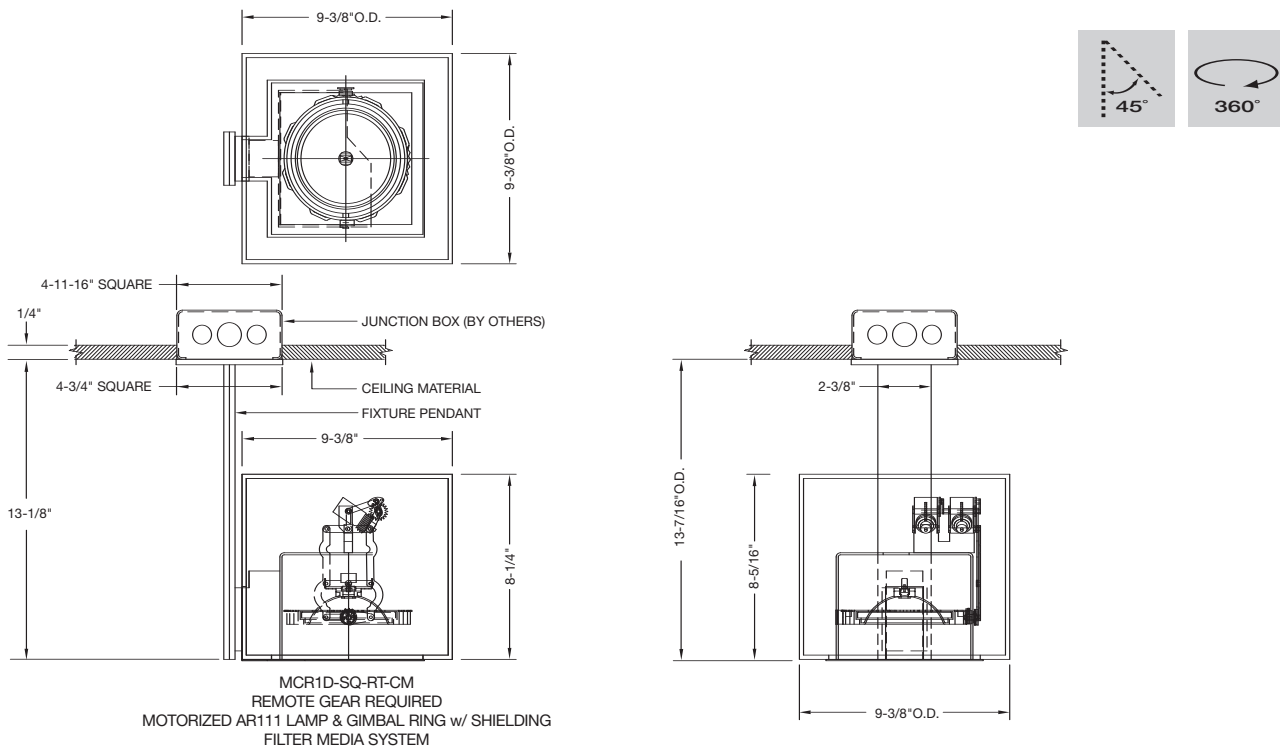
# Crystal Cubes™

US patents #6,820,999 and #6,511,208 | Other patents pending.

## One MR16 Lamp, Ceiling Mounted



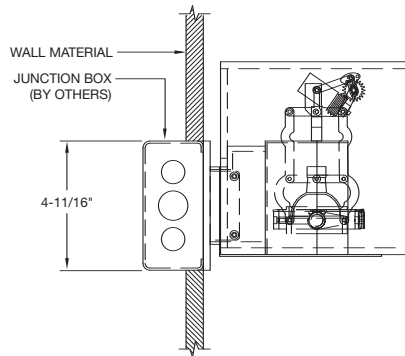
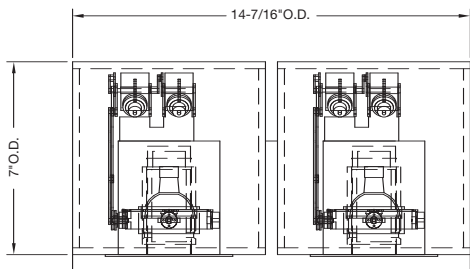
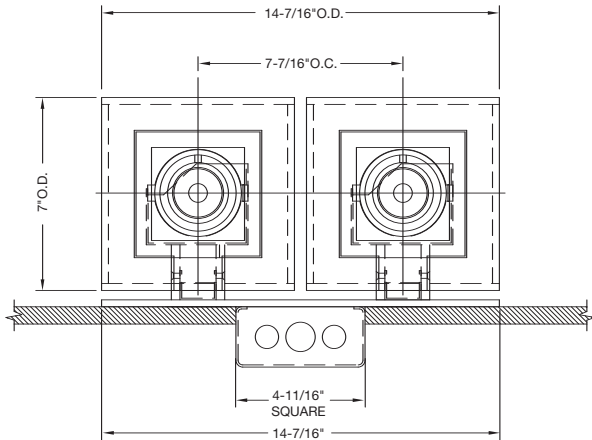
## One AR111 Lamp, Ceiling Mounted



# Crystal Cubes™

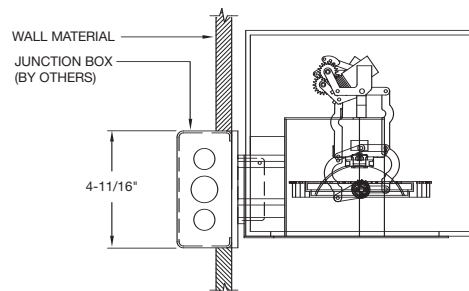
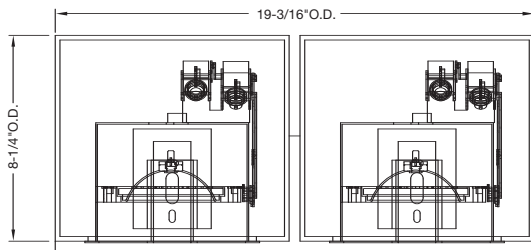
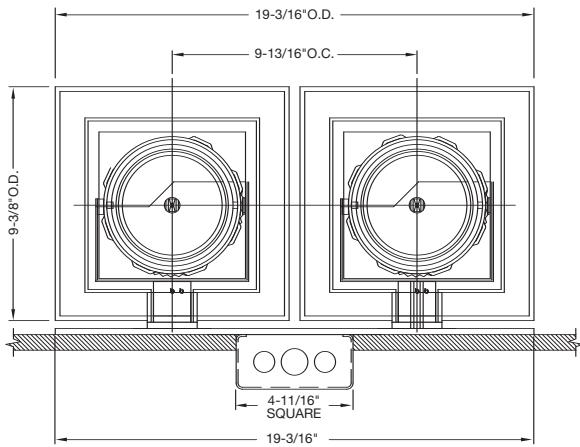
US patents #6,820,999 and #6,511,208 | Other patents pending.

## Two MR16 Lamps, Wall Mounted



MCR2B-SQ-RT-WM  
 REMOTE GEAR REQUIRED  
 MOTORIZED MR16 LAMP & GIMBAL RING w/ SHIELDING  
 FILTER MEDIA SYSTEM (2) REQUIRED.

## Two AR111 Lamps, Wall Mounted



MCR2D-SQ-RT-WM  
 REMOTE GEAR REQUIRED  
 MOTORIZED AR111 LAMP & GIMBAL RING w/ SHIELDING  
 FILTER MEDIA SYSTEM (2) REQUIRED.

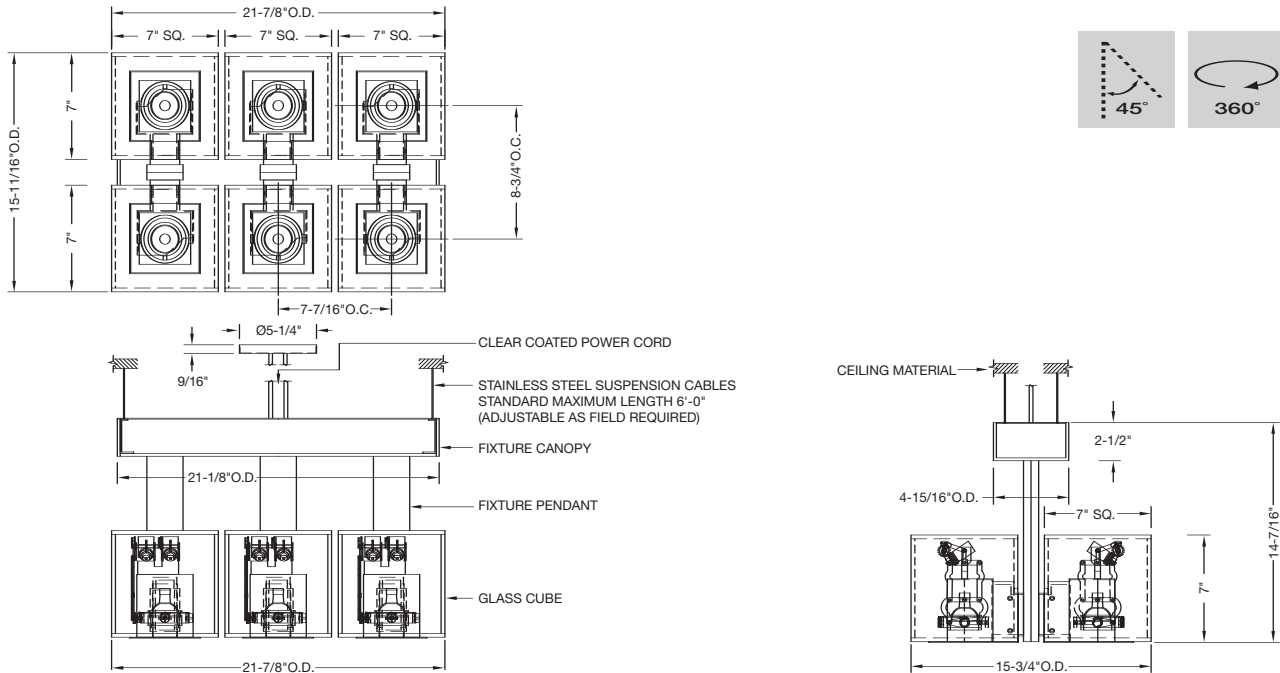




# Crystal Cubes™

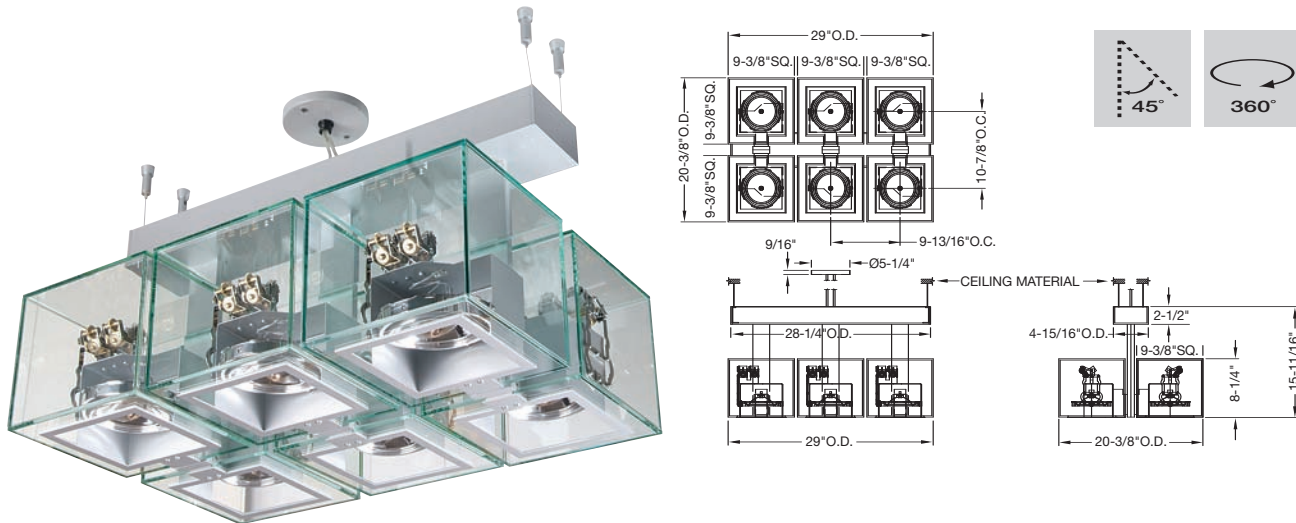
US patents #6,820,999 and #6,511,208 | Other patents pending.

## Six MR16 Lamps, Pendant Mounted



MCR6B-SQ-TI-PM  
 ELECTRONIC GEAR INCORPORATED  
 WIRELESS CONVERTER IN REMOTE LOCATION  
 MOTORIZED MR16 LAMP & GIMBAL RING w/ SHIELDING  
 FILTER MEDIA SYSTEM (6) REQUIRED.

## Six AR111 Lamps, Pendant Mounted

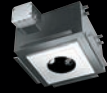


MCR6D-SQ-TI-PM  
 ELECTRONIC GEAR INCORPORATED  
 WIRELESS CONVERTOR IN REMOTE LOCATION  
 MOTORIZED AR111 LAMP & GIMBAL RING w/ SHIELDING  
 FILTER MEDIA SYSTEM (6) REQUIRED.

**Also available:**



**Low Voltage Halogen (TI) (TA) (RT)**



**Single Aperture – Multiple Lamps**



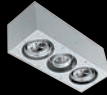
**PAR – Primary Voltage (PV)**



**Stainless Steel**



**HID – (Metal Halide) (PV)**



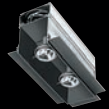
**Companion Series – Surface Mounted**



**Mixed Lamp Sources**



**Apertures® (patented)**



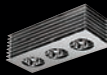
**Linears™ (patented)**



**Uplights**



**Trimless (TI) (TA) (RT)**



**Custom – Special**



**Baffles**



**Accessories**

**Modular International Inc.**  
3941 California Avenue  
Pittsburgh, PA 15212  
412 734-9000  
412 734-5210 fax  
[www.modularinternational.com](http://www.modularinternational.com)

Modular International, Inc. produced a major portion of the lighting for the project shown on the enclosed photographs. The photographs, however, are not intended to imply that the various owners of the projects endorse our products or use our products exclusively.

Modular reserves the right to alter material, dimensions and characteristics without prior notice.